

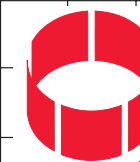


**Quinshield Ltd**

Capel Hendre  
Ammanford,  
Carmarthenshire  
SA18 3SJ

Tel: 01269 832220  
Fax: 01269 832221  
email: enquires@quinshield.com  
www.quinshield.com

**Quinshield**



**Quinshield Ltd**

Capel Hendre  
Ammanford,  
Carmarthenshire  
SA18 3SJ

Tel: 01269 832220  
Fax: 01269 832221  
email: enquires@quinshield.com  
www.quinshield.com

**Quinshield**

### The Covers Range

The specifications of our Covers Range provide purpose made design features to satisfy customer requirements for pre-fabricated maintenance free units providing environmental protection to suit many different applications and locations.



### Construction

Moulded in Glass Reinforced Polyester (GRP) composite construction. GRP laminate is made from structural polyester resin reinforced with chopped strand matt glassfibre. Core materials are used to satisfy different structural insulation requirements. Larger panels are suitably reinforced to maintain structural stability.

Designed to comply with CP3: Chapter 5/BS 6399 1984 wind, snow and seismic loadings and all other relevant British Standards. Enhanced loadings to 5Kn/m<sup>2</sup> or greater are also available. Standard fixing is through reinforced GRP flanges. Life expectancy is in excess of 30 years.

### Finishes

Available in smooth moulded satin or textured external finish.

Choice of colours from the BS 4800 and RAL ranges. Internal finish: The standard internal finish is white GRP. Other finishes can be supplied.

### Insulation

Various constructions are available giving 'U' value from 3.0W/m<sup>2</sup>C° down to 0.5 W/m<sup>2</sup>C° to satisfy specific insulation requirements.

### Fire Rating

Fire retardant resin is used to provide self extinguishing laminates to BS 476 Part 7 Class 2 (Surface spread flame).

Due to our policy of maintaining a continuous review of product performance and materials of construction, we reserve the right to amend the design and dimensions of the products illustrated in this publication at any time and without prior notice.

### Sound Attenuation

Sound attenuation of up to 50dBA can be achieved, over octave band centre frequency range of 31 Hz to 8KHz by use of different construction materials



### Environmental Protection

Dust, weather and splash-proof to a minimum of IP 54 protection rating BS 5490 1977. Higher degrees of protection can be provided to IP 55 and IP 65.

### Ventilation

Natural ventilation is provided by means of integral vents. Forced ventilation to meet specific requirements can be provided by suitable fans.

### Quality

All manufacture and customer service is controlled by an effective quality assurance system, in line with the recommendation of BS 5750/ISO 9000.

### Other Products

Quinshield Ltd. also design and manufacture a comprehensive range of other products (Details on separate brochures).



**COVERS**



**GRP**  
Products

**COVERS**

**TECHNICAL  
SPECIFICATION**



**The Product**

Quinshield's Cover Range are purpose-made to provide the most effective engineering solution for each specific situation. The GRP composite structures are designed to withstand wind, snow, seismic and personnel loadings. The totally encapsulated construction provides an impervious barrier against the ingress of moisture, with excellent weather and chemical resistance to give robust, maintenance free, long service life in the harshest of environments.

**Design**

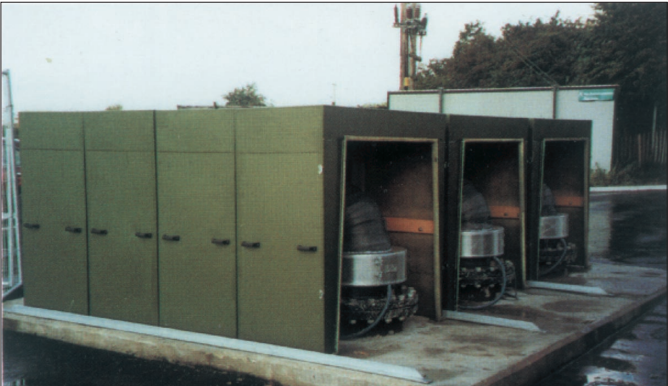
The scope includes man-handleable lift off covers, heavy duty self supporting beam type covers for wide spans, circular segmental covers and detachable sectionalised cover systems.

**Applications**

Quinshield's covers are supplied throughout the UK and abroad to interface with a wide diversity of project needs and environmental issues.

Typical applications include:-

- ODOUR CONTROL
- SEWAGE TREATMENT
- PUMP AND VALVE SYSTEMS
- POTABLE WATER FILTRATION
- ACOUSTIC ATTENUATION
- CHEMICAL PROCESS



**Advantages**

Design flexibility, efficiency and economy to provide the optimum total package solution.

- Durability and long service life.
- Robustness and security.
- Maintenance free materials.
- Weather and chemical resistance.
- Speed of delivery and installation from a specialist supplier
- Reduction in site costs.
- Choice of colours and finishes.
- Easy to handle and locate.

**Delivery and Installation**

A complete delivery and installation service is provided.

On site installation is by our skilled and experienced team.

All site work is performed in compliance with current health and safety requirements and relevant site conditions.

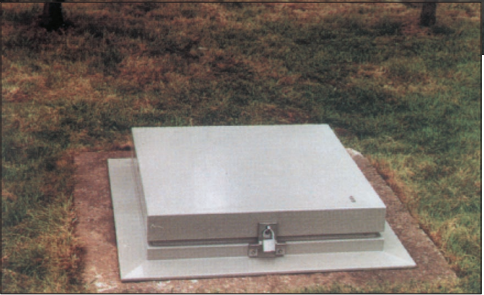
Ease of installation greatly cuts down time and cost on site.

Close liaison is maintained with our clients to ensure effective organisation of delivery and installation.

Cranage and special handling equipment are used as necessary.

**CUSTOMISED FEATURES**

- Access hatches.
- Viewing panels.
- Lifting handles / Lifting eyes.
- Removable sections.
- Extra insulation.
- Ventilators.
- Anti slip surfaces.
- Apertures / Single skin areas
- Sliding covers.
- Explosion relieving panels.
- Hydraulic lifting / Roll Gear.
- Acoustic treatment.



**Quinshield**